

AIM UNIVERSITY GROUP



2021/22 UNIVERSITY PROSPECTUS

WELCOME TO THE GLOBAL STUDENT RECRUITMENT CENTER AT
AIM UNIVERSITY GROUP



ABOUT US

Since 2011, The American Institute Of Management And Science University Group has been recruiting learners onto our globally recognized BTEC programs and for degree top-up at University Of Northampton. We partner with a number of world-leading universities in the US, UK, and Canada to organize annual college tours to encourage our learners to study abroad for the final years. AIM University Group is a great way to experience new cultures while working and studying. Come and immerse in a new culture while you gain work experience and earn an accredited degree.

PHONE: 786-980-1429 (USA)

PHONE: 876-613-9108 (JAMAICA)

PHONE: 954-325-5319 (WhatsApp)

EMAIL: Enroll@AimUniversityGroup.org

WEBSITE: www.AimUniversityGroup.org

This opportunity is life changing



LEARN AND EARN

Professional Certificates, Higher National Diplomas, Postgraduate Diplomas, And Bachelor's And Master's Degree Top-Ups

Learn With Confidence | AIM University Group is a Pearson International Campus. Our courses are delivered via flexible distance learning method, live online, and face-to-face in Jamaica and the United States. We offer accredited undergraduate and graduate qualifications which are accepted globally by universities, employers, and governments for professional licensing. Our modern higher education programs are backed by the quality and reputation of BTEC – UK's largest examination board, and our learners can enter their final year for the degree at University Of Northampton - a respectable UK University. We are proud of our sound reputation and the employability of our students when they graduate.

Earn While you Learn From Day One | Become a part of our network of International Admission Agents. Your job is to recruit prospective students and other Admission Agents, and you can earn up to US\$2,500 per month in bonus and commission. You may use this money to finance your education and make your dream of living and working abroad, a reality. Our students are invited to apply and earn while they learn.

Study And Work Abroad | our Learners may complete final year/s abroad, and through the new Graduate Immigration Route, the undergraduate and graduate students will be able to benefit from two years' work experience in the UK. Graduates who complete their PhD will be able to stay for three years. You will be able to stay and work, or look for work, at any skill level. You can also work for 20 hours during classes and 40 hours during the break.



INTERNATIONALLY RECOGNISED QUALIFICATIONS

- ❑ AIM University Group is accredited by The Business And Technology Education Council (BTEC). The qualifications are professional certificates, higher national diplomas, postgraduate diplomas, and the bachelor's and master's degree top-up with partnering universities on the final year of study.
- ❑ BTEC is the largest Examination Board in the United Kingdom and its awards are globally acceptable for employment, higher education, and licensing with government agencies. BTECs are the fastest and most affordable way to enter the final year of university for the bachelor's and master's degrees. The programs are designed with the theoretical and practical skills you'll need to specialize in your area of interest.
- ❑ **CLASSES FOR THE PGD** | Graduate students earn BTEC Level 7 Professional Extended Diploma (PgD) in the first eight (8) months, then advance directly to final year to complete the master's degree in just eight (8) more months. The PgD at AIM is distance learning, while final year can be done on-campus in the US, UK, or Canada.
- ❑ **CLASSES FOR THE HND** | Undergraduate Students earn BTEC Level 5 Higher National Diploma (HND) in the first 24 Months, then advance directly to final year to complete the bachelor's degree in little as eight (8) months. Classes for the HND are held online, on-campus, and distance learning.

Students attending online will join the same classes that are held on campus in Jamaica and will participate in real time in the tutorials, oral discussions, and group activities underway. Students can also attend face-to-face tutoring in Kingston and Fort Lauderdale with some sessions online. Our Kingston site offers boarding and will accommodate local and international students, while in Florida, US Residents only. Distance learners do not attend the live classes online or on-campus but must meet the same academic requirements. Distance Learners access the recorded lessons and lecture notes on the academic website.

- ❑ **FINAL YEAR ABROAD FOR THE BACHELORS AND MASTERS DEGREES:** Final year for the degree top-up can be distance learning, or on-campus in Canada, US, and UK. If a student chooses distance learning at University Of Northampton, they can still attend their official graduation ceremony abroad. Northampton offers 100+ courses in more than 50 different areas and the prestigious ranking agencies of the world have constantly ranked the University of Northampton among the top Universities in the UK.



UNDERGRADUATE PROGRAMS

UK Level 5 Higher National Diploma And The Bachelor Honors Degree (Top-Up)

STARTING IN THE SPRING, SUMMER AND FALL:

- Business Study | Accounting And Finance
- Business Study | Human Resource Management
- Business Study | Entrepreneurship and Small Business Management
- Business Study | Law
- Business Study | Management
- Business Study | Marketing
- Healthcare Practice | Nursing and Nursing Assistant
- Healthcare Practice | Public Health
- Healthcare Practice | Healthcare Management
- International Travel And Tourism Management | Aviation Operations
(units will cover Airline and Airport Operations Management; Onboard Passenger Operations for Flight Attendant; and Handling Airport Passenger Operations Services)

STARTING IN THE FALL ONLY:

- Computer Study | General Pathway
- Computer Study | Network Engineering
- Computer Study | Software Engineering
- Computer Study | Security
- Early Childhood Education and Care | General
- Early Childhood Education and Care | Leadership and Management
- Early Childhood Education and Care | Education
- Early Childhood Education and Care | Social and Community Care Practice
- General Engineering
- Hospitality Management (General Pathway)

GRADUATE PROGRAMS

UK Level 7 Professional Diploma And Master's Degrees (Top-up)



- BTEC Level 7 Extended Diploma In Strategic Management And Leadership (PgD)
- Accounting And Finance Top-Up MSc
- Human Resources Management Top-Up MA
- International Hotel Management (MA)
- International Tourism Development (MA)
- International Special Events Management (MSc)
- Master Of Business Administration Top-Up MBA
- Executive Master Of Business Administration Top-Up MBA
- Education (MA)
- Project Management (MSc)
- Psychology (MSc)
- Social Work MA

ONE YEAR AND TWO YEARS CONTINUING EDUCATION PROGRAMS



PRE-MEDICINE | STEM PROGRAMS

Ordinary And Advanced Levels
For High School Students And Adults

The pre-med program is for UK Medical School and targeting learners seeking to enter medical school to study Medicine, Veterinary Medicine, Dentistry And Biomedicine. The program covers the Ordinary Level (Year1) and Advanced Level (Year2) in Biology, Chemistry/Physics, English and Mathematics; and include preparation for the UK Biomedical Admissions Test (BMAT) OR the University Clinical Aptitude Test (UCAT). The Ordinary Level is for High School Honors Students from grades 7 – 11, and adults without these subjects in CSEC or O' Levels.



University Of Cambridge's Cambridge Assessment

TRAVEL AND TOURISM | ORDINARY AND ADVANCED SUBSIDIARY LEVELS

for university matriculation and up to 45 credits for course exemptions on the same-name degree programs

It explores features of the travel and tourism industry , principles of customer service in travel and tourism, and planning and managing a travel and tourism event. Added are units in Airline and Aviation Operations: Handling Air Passengers and Onboard Passenger Operations (Flight Attendants) for a separate certification.



University Of Cambridge's Cambridge Assessments

BUSINESS STUDY | ORDINARY AND ADVANCED SUBSIDIARY LEVELS

for university matriculation and up to 45 credits for course exemptions on the same-name degree programs

Includes business and environment, people in organizations, marketing, operations and project management, and finance and accounting .

SINGLE COURSE UNIT ON THE HND: 12-WEEKS

(BTEC UNIT CERTIFICATES VALUING 15 TRANSFERRABLE UNIVERSITY CREDITS)

TAKE A BUSINESS UNIT FOR \$350

- Unit 1 Business and the Business Environment (15)
- Unit 2 Marketing Processes and Planning (15)
- Unit 3 Human Resource Management (15)
- Unit 4 Leadership and Management (15)
- Unit 5 Accounting Principles (15)
- Unit 7 Business Law (15)
- Unit 20 Organizational Behavior (15)
- Unit 28 Launching A New Venture (15)
- Unit 34 Digital Marketing (15)
- Unit 43 Business Strategy (15)
- Unit 49 Sales Management (15)

TAKE A TRAVEL AND TOURISM MANAGEMENT UNIT FOR \$350

- Unit 10 Tour Operations Management (15)
- Unit 21 Airline Operations Management (15)
- Unit 22 Airport Operations Management (15)
- Unit 2 Managing The Customer Experience (15)
- Unit 50 Customer Value Management (15)



16-WEEK CAREER TRAINING WITH CERTIFICATE

AIRLINE AND AVIATION OPERATIONS



COMPULSORY COURSES

- Unit 19 L3 Handling Air Passengers (NC)
- Unit 22 L3 Onboard Passenger Operations (NC)

SPA 100 / FRE 100 IS OPTIONAL AT \$100 ADDED PER UNIT

- SPA 100 Conversational Spanish For Airline and Airport Passenger Services (NC)
- FRE 100 Conversational French For Airline and Airport Passenger Services (NC)

❖ NC = No College/University Credits

IF YOU HAVE NO CSEC SUBJECTS OR SAT SCORE COME AND MATRICULATE FASTER FOR UNIVERSITY AND WORK WITH A GED

GED IS:

- US High School Equivalency Certificate for adults. It's same as having five (5) or more CSEC / IGCE subjects.
- Generally accepted in all 50 US States and Canada for work and university admission. It's globally recognized test scores will show that you have a level of knowledge equivalent to high school graduates.
- GED is taught 100% online for three (3) Months. Final exams are done online. Testing centers are in Kingston, any city in the United States, and Canada.

ENTRY REQUIREMENTS:

There is no formal subject requirement for entry onto the GED.

GED TOPICS/SUBJECTS:

Mathematics, Reasoning Through Language Arts, Social Studies and Science. Earning high scores on your GED is a popular way to gain scholarship to US and Canadian Universities.

TUITION AND PAYMENT PLANS:

Total for the four classes and examinations is \$780.00. This may be paid in full or using 2 or 3 part-payment plans. The first payment is \$450. Using the two-payment option the balance of \$330 is paid in four weeks; or the three-payments, pay \$165 in four weeks, and the third and final payment of \$165 at eight weeks.

BENEFITS OF THE AIM UNIVERSITY EXPERIENCE

<p>FREE TRAVEL AND STUDY ABROAD OPPORTUNITIES FOR ALL STUDENTS</p>	<p>Undergraduate students study 100% online, distance learning and on-campus in Kingston and Fort Lauderdale for 24 Months; while graduate students study distance learning for 8-12 Months. All Learners can top-up final year/s for the degree at university in the US, UK, and Canada. With exception of the US, this allows 20 hours of paid work during the school term, 40-hours during break, and up to two years upon graduating. Learners who choose to top-up by distance learning can still attend the graduation ceremony abroad.</p> <p>There is also opportunity for all learners to travel during first year for experiential learning to Panama and Florida; and our annual college tours to the United States or United Kingdom.</p> <p>Learners with travel credits earned upon paying the program tuition in full can redeem the equivalent value to cover airline ticket, accommodation, or ground transportation on the planned travel itinerary.</p>
<p>AN ACCREDITED DIPLOMA AND DEGREE WILL PUT YOU AHEAD</p>	<p>A degree will give you a sense of confidence moving forward and put you a step ahead professionally. Use this widely recognised credential to advance to final year abroad, climb the ladder at your current employer, or find better jobs elsewhere.</p>
<p>MONTHLY PAYMENTS AND LOWEST TUITION - GUARANTEED!</p>	<p>AIM University Group is committed to making education affordable for you with semesterly, termly, and monthly payment options and the lowest tuition for international students guaranteed!</p>
<p>BIG DISCOUNTS</p>	<p>To make college affordable, we have created a bursary program that gives big financial rewards to students from economically challenged families who would not normally have access to financial aids and loans.</p>
<p>SCHOLARSHIPS AND TUITION WAIVER FOR HIGH PERFORMING STUDENTS</p>	<p>Non-resident Tuition waiver are available to exceptionally high performing students. Students will still need to cover costs such as external exam fees, room and board, food, and transportation.</p>
<p>SHORT COURSES WITH COLLEGE CREDIT</p>	<p>Earn College Credits for \$350 on a course studied over 12 weeks. Pass the coursework and earn fifteen (15) credits. See our 2021-22 Admission Brochure for the list of available units.</p>

FREE EDUCATION MONTH

<p>The Free Education Month is the best way for potential students to experience the courses in their areas of interest and enjoy AIM University Group before formally enrolling and paying the tuition.</p> <p>Participating students must apply and pay the \$30 application fee, then request that the tuition for the program be waived for the promotional period. If the student decides to stay on the course, only then will s/he pay the tuition and enroll.</p> <p>The Free Education Month will allow you to follow their passions and abilities, while assessing the value of the educational experience at AIM University Group. Get started today. There's limited Space.</p>	<p style="text-align: center;">February 22 - March 19 May - July</p> <ul style="list-style-type: none"> • Level 5 Business Study (Accounting HRM Law Entrepreneurship Management Marketing) • Level 5 International Travel And Tourism Management (Airline and Aviation) • Level 7 Strategic Management And Leadership (for the MBA)
---	---

University Recognition And Articulations

AIM University Group works with a range of higher education institutions around the world that recognize and accept BTEC as a qualification for entry and advanced placement onto the degree. The universities allow advanced entry onto the second or third year of an undergraduate degree, and final year of a master's degree. The agreements can include credit transfer, articulation, and case-by-case admission. Students should be aware that university admission criteria are always subject to change and remain at the discretion of the institution. Students should take time to understand the course entry requirements for subject, year, and grade before applying. For more information on entry requirements, including 2+1 articulations, please visit: <https://www.ighernationals.com/degree-finder>



JOIN US THIS SEMESTER |
APPLY ONLINE NOW

[AimUniversityGroup.Org](https://www.aimuniversitygroup.org)

TUITION AND FINANCING



Lowest Tuition For International Students – Guaranteed!

2021/2022 TUITION SCHEDULE

BUSINESS, HEALTHCARE, EARLY CHILDHOOD EDUCATION AND INTERNATIONAL TOURISM UNDERGRAD | BTEC L5 HIGHER NATIONALS

- Pay Per Year - Annually \$1, 830
- Pay Per Semester - 2 Payments \$ 955
- Pay Per Term - 3 Payments \$ 660
- Pay Per Course \$ 350

COMPUTING AND GENERAL ENGINEERING UNDERGRAD | BTEC L5 HIGHER NATIONALS

- Pay Per Year - Annually \$2, 500
- Pay Per Semester - 2 Payments \$1, 250
- Pay Per Term - 3 Payments \$ 850

GRADUATE PROGRAMS | BTEC L7 EXTENDED PROFESSIONAL

- Pay in Full £2, 540
- Pay Per Semester £1, 300
- Pay Per Term £ 900
- Pay Per Credit £ 23

ONE YEAR MATRICULATION PROGRAMS | CAMBRIDGE INTERNATIONAL EXAMINATIONS

- Pay Per Year - Annually \$1, 300 * CIE Exam Fees Excluded
- Pay Per Semester - 2 Payments \$ 650 * CIE Exam Fees Excluded
- Pay Per Term - 3 Payments \$ 500 * CIE Exam Fees Excluded

SIXTEEN WEEK COLLEGE COURSES

- Pay Per Course \$ 350

SIXTEEN WEEK AIRLINE CERTIFICATE SHORT COURSES (UNITS 19 & 22)

- Pay in Full \$ 450
- Pay Twice \$ 250 & \$250

US HIGH SCHOOL DIPLOMA (GED)

- Pay in Full \$ 780 *Exam Fee Included
- Pay Per Semester \$ 450 & \$330 *Exam Fee Included
- Pay Per Term \$ 450 & \$165 & \$165 *Exam Fee Incl

COURSE OUTLINES

Our Most Popular Programs



JOIN US THIS SEMESTER |
APPLY ONLINE NOW

AimUniversityGroup.Org

A. PROGRAM AWARD AND ACCREDITATION

TITLE OF QUALIFICATION	BTEC Higher National Diploma (HND) in International Travel And Tourism Management (Aviation)		
TAUGHT AT	AIM University Group		
AWARDING BODY	Business, Technology And Educational Council (BTEC)		
QUALIFICATION APPROVAL BODIES	Office Of Qualification And Examination Council (OFQUAL); and Qualifications and Curriculum Authority (QCA)		
ACCREDITATION NUMBER	603/2281/0	LINK	https://register.ofqual.gov.uk/
Optional: Degree (Final Year)	BA (HONS) Degree In International Tourism Management, University Of Northampton		

B. DURATION OF STUDY AND YOUR FINANCIAL OBLIGATION

DURATION OF STUDY	24 Months For The HND A college year is eight months with two semesters. The regular program duration for the higher nationals is 24 Months but can be completed in 16/20 months by taking additional courses.		
FINANCIAL INFORMATION	CHOOSE A FLEXIBLE PAYMENT	US\$	TOTAL COST OF YOUR PAYMENT PLAN
	FULL PAYMENT: PAY 24-MONTH PROGRAM FEE ONCE (Save \$1,200)	\$5,000	\$5,000
	ANNUAL PAYMENT: PAY ONCE PER YEAR (SAVE \$710)	\$1,830	\$5,490
	SEMESTER PAYMENT: PAY TWICE PER YEAR (SAVE \$470)	\$955	\$5,730
	TERM PAYMENT: PAY THRICE PER YEAR (SAVE \$260)	\$660	\$5,940
	<i>PAY PER COURSE (See the payment schedule below)</i>	<i>\$350</i>	<i>\$6,200</i>

C. COURSES AND CREDITS ON THIS PROGRAM

			COLLEGE CREDITS	UNIT LEVEL	PAYING PER COURSE?
YEAR ONE (8 MONTHS)	FALL SEMESTER 1	Unit 1 The Contemporary Travel and Tourism Industry (C)	15	L4	\$350
		Unit 2 Managing the Customer Experience (C)	15	L4	\$350
		Unit 19 L3 Handling Air Passengers and Unit 22 L3 Onboard Passenger Operations (NC)	NC	L3	\$250
	SPRING SEMESTER 2	Unit 3 Professional Identity and Practice (C)	15	L4	\$350
		Unit 4 The Travel and Tourism Business Toolkit (C)	15	L4	\$350
		Unit 6 Managing Aviation Services (C)	30	L4	\$350
YEAR TWO (8 MONTHS)	SUMMER SEMESTER 1	Unit 5 Leadership and Management for Service Industries (Pearson-set) (30) – (C)	15	L4	\$350
		Unit 16 Marketing Essentials for Travel and Tourism (O)	15	L4	\$350
		Unit 19 Research Project (Pearson-set) (C)	30	L5	\$350
	FALL SEMESTER 2	Unit 21 Airline Operations Management (S)	15	L5	\$350
		Unit 22 Airport Operations Management (S)	15	L5	\$350
		UNIT 44 L5 Organizational Behavior (O)	15	L5	\$350
YEAR THREE (8 MONTHS)	SPRING SEMESTER 1	Unit 20 Tourism Consumer Behaviour and Insight (C)	15	L5	\$350
		Unit 23 Strategic Planning for Air Transport (S)	15	L5	\$350
		Unit 50: Customer Value Management (O)	15	L5	\$350
	SUMMER SEMESTER 2	UNIT 10 Tour Operations Management (O)	15	L4	\$350
		Unit 39 Sales Management (O)	15	L5	\$350
		Unit 48: Launching a New Venture (O)	15	L5	\$350

CREDIT REQUIREMENTS: 240 | A PASS GRADE must be gained on all core units (C) and specialist units (S). Referred is allowed on three optional units only.

A. PROGRAM AWARD AND ACCREDITATION					
TITLE OF QUALIFICATION	BTEC Higher National Diploma (HND) in Business (with Accounting and Finance/Entrepreneurship/ HRM/Law/Management/Marketing)				
TAUGHT AT	AIM University Group				
AWARDING BODY	Business, Technology And Educational Council (BTEC)				
QUALIFICATION RECOGNITION BODIES	Office Of Qualification And Examination Council (OFQUAL); and Qualifications and Curriculum Authority (QCA)				
ACCREDITATION NUMBER	601/8365/2	LINK	https://register.ofqual.gov.uk/		
Optional: Degree (Final Year) BA (HONS) Degree In Business Study, University Of Northampton					
B. DURATION OF STUDY AND YOUR FINANCIAL OBLIGATION					
DURATION OF STUDY	24 Months For The HND A college year is eight months with two semesters. The regular program duration for the higher nationals is 24 Months but can be completed in 16/20 months by taking additional courses.				
FINANCIAL INFORMATION	CHOOSE A FLEXIBLE PAYMENT		US\$	TOTAL COST OF YOUR PAYMENT PLAN	
	FULL PAYMENT: PAY 24-MONTH PROGRAM FEE ONCE (Save \$1,300)		\$5,000	\$5,000	
	ANNUAL PAYMENT: PAY ONCE PER YEAR (SAVE \$810)		\$1,830	\$5,490	
	SEMESTER PAYMENT: PAY TWICE PER YEAR (SAVE \$570)		\$955	\$5,730	
	TERM PAYMENT: PAY THRICE PER YEAR (SAVE \$360)		\$660	\$5,940	
	PAY PER COURSE (See the payment schedule below)		\$350	\$6,300	
C. COURSES AND CREDITS ON THIS PROGRAM			COLLEGE CREDITS	COURSE LEVEL	PAYING PER COURSE?
YEAR ONE (8 MONTHS)	FALL SEMESTER 1	UNIT 1: Business and the Business Environment (C)	15	L4	\$350
		UNIT 7 Business Law (C)	15	L4	\$350
		UNIT 5 Management Accounting (C)	15	L4	\$350
	SPRING SEMESTER 2	UNIT 3 L4 Human Resources Management	15	L4	\$350
		A SPECIALISATION UNIT (S)	15	L5	\$350
		UNIT 10 Financial Accounting (C)	30	L4	\$350
YEAR TWO (8 MONTHS)	SUMMER SEMESTER 3	UNIT 2: Marketing Essentials (C)	15	L4	\$350
		UNIT 4 Management and Operations (C)	15	L4	\$350
		UNIT 6 Managing a Successful Business Project (Pearson-set) (C)	15	L4	\$350
	FALL SEMESTER 4	UNIT 11 Research Project (Pearson-set) (C)	30	L5	\$350
		UNIT 32 Business Strategy (15)	15	L5	\$350
		UNIT 44 L5 Organizational Behavior (15)	15	L5	\$350
YEAR THREE (8 MONTHS)	SPRING SEMESTER 5	Unit 37: Consumer Behaviour and Insight	15	L5	\$350
		A SPECIALISATION UNIT (C)	15	L5	\$350
		Unit 50: Customer Value Management (15)	15	L5	\$350
	SUMMER SEMESTER 6	A SPECIALIZATION UNIT (C)	15	L5	\$350
		Unit 39 Sales Management (15)	15	L5	\$350
		Unit 48: Launching a New Venture (15)	15	L5	\$350
CREDIT REQUIREMENTS: 240 A PASS must be gained on all core units (C) and specialist units (S). Referred is allowed on three optional units.					

A. PROGRAM AWARD AND ACCREDITATION

TITLE OF QUALIFICATION	BTEC Higher National Diploma (HND) in Healthcare Practice (with one of the following specializations: Nursing and Healthcare Support/Public Health and Health Promotion/ Healthcare Management)		
TAUGHT AT	AIM University Group		
AWARDING BODY	Business, Technology And Educational Council (BTEC)		
QUALIFICATION RECOGNITION BODIES	Office Of Qualification And Examination Council (OFQUAL); and Qualifications and Curriculum Authority (QCA)		
ACCREDITATION NUMBER	603/2294/9	LINK	https://register.ofqual.gov.uk/

Optional: Degree (Top-Up) **BA (HONS) Degree In Health And Social Care at University Of Northampton**

B. DURATION OF STUDY AND YOUR FINANCIAL OBLIGATION

DURATION OF STUDY	24 Months For The HND A college year is eight months with two semesters. The regular program duration for the higher nationals is 24 Months.		
FINANCIAL INFORMATION	CHOOSE A FLEXIBLE PAYMENT	US\$	TOTAL COST OF YOUR PAYMENT PLAN
	FULL PAYMENT: PAY 24-MONTH PROGRAM FEE ONCE (Save \$1,300)	\$5,000	\$5,000
	ANNUAL PAYMENT: PAY ONCE PER YEAR (SAVE \$810)	\$1,830	\$5,490
	SEMESTER PAYMENT: PAY TWICE PER YEAR (SAVE \$570)	\$955	\$5,730
	TERM PAYMENT: PAY THRICE PER YEAR (SAVE \$360)	\$660	\$5,940
	<i>PAY PER COURSE (See the payment schedule below)</i>	\$350	\$6,650

C. COURSES AND CREDITS ON THIS PROGRAM

			COLLEGE CREDITS	UNIT LEVEL	PAYING PER COURSE?
YEAR ONE (8 MONTHS)	FALL SEMESTER 1	UNIT 1: Law, Policy and Ethical Practice in Healthcare	15	L4	\$350
		BIO 100 Fundamentals of Anatomy and Physiology for Health and Health (NC)	NC	GE	\$350
		UNIT 9: Fundamentals of Anatomy and Physiology for Health and Health	15	L3	\$350
	SPRING SEMESTER 2	UNIT 2: Demonstrating Professional Principles and Values in Health and Social Care	30	L4	\$700
		UNIT 3: Supporting the Individual Journey through Integrated Health and Social Care	15	L4	\$350
		Unit 23: Managing Quality in Care Environments	15	L5	\$350
YEAR TWO (8 MONTHS)	SUMMER SEMESTER 3	UNIT 5: Health Education in Action	15	L4	\$350
		UNIT 18: L5 Innovation and Improvement through Action Research (Pearson-set Project)	30	L5	\$700
		UNIT 4: Fundamentals of Evidence-Based Practice(Pearson-Set Project)	15	L4	\$350
	FALL SEMESTER 4	Unit 19: Innovation and Improvement through Action Research (Pearson-Set Project)	30	L5	\$700
		UNIT 31 L5 Providing Outpatient and Community Care	15	L5	\$350
		UNIT 38 L5 Nursing – Principles and Fundamentals of Practice	15	L5	\$350
YEAR THREE (8 MONTHS)	SPRING SEMESTER 5	Specialist pathway – unit	15	L5	\$350
		UNIT 24 L5 Health Psychology	15	L5	\$350
		Specialist pathway – unit	15	L5	\$350
	SUMMER SEMESTER 6	Specialist pathway – unit	15	L5	\$350

CREDIT REQUIREMENTS: 240 | A PASS must be gained on all core units (C) and specialist units (S). Referred is allowed on two optional units.

A. MASTER'S PROGRAM (AWARD AND ACCREDITATION)						
TITLE OF QUALIFICATION	BTEC Edexcel Level 7 Extended Diploma in Strategic Management and Leadership					
TAUGHT AT	AIM University Group					
AWARDING BODY	Business, Technology And Educational Council (BTEC)					
QUALIFICATION RECOGNITION BODIES	Office Of Qualification And Examination Council (OFQUAL); Qualifications and Curriculum Authority (QCA)					
ACCREDITATION NUMBER	601/8365/2	LINK	https://register.ofqual.gov.uk/			
Degree (Final Year)	Executive Master of Business Administration, University Of Northampton					
B. DURATION OF STUDY AND YOUR FINANCIAL OBLIGATION						
DURATION OF STUDY	16 Months For The Extended Diploma A college year is eight months with two semesters. The regular program duration for the extended diploma is 16 Months but can be completed in 12 months by taking additional courses.					
FINANCIAL INFORMATION	CHOOSE A FLEXIBLE PAYMENT		£	TOTAL COST OF YOUR PAYMENT PLAN		
	FULL PAYMENT: PAY 16-MONTH PROGRAM FEE ONCE (Save £220)		£2,540	£2,540		
	MAKE TWO PAYMENTS (SAVE £160)		£1,300	£2,600		
	MAKE THREE PAYMENTS (SAVE £60)		£900	£2,700		
	PAY PER CREDIT (See the payment schedule below)		£23	£2,760		
	External BTEC Registration And Assessment Fee of £550 is to be added					
C. COURSES AND CREDITS ON THIS PROGRAM			COLLEGE CREDITS	COURSE LEVEL	PAYING PER COURSE?	
12 MONTHS	FALL SEMESTER ONE	UNIT 1: Strategic Management and Leadership	20	L7	£460	
		UNIT 2: Strategic Change Management	20	L7	£460	
	SPRING SEMESTER TWO	UNIT 3: Research Methods	20	L7	£460	
		Unit 7: Strategic Human Resource Management	20	L7	£460	
	SELECT TWO UNITS FROM THE FOLLOWING OPTIONS					
	SUMMER SEMESTER THREE	Unit 5: Strategic Marketing Management	20	L7	£460	
		Unit 8: Financial Principles and Techniques For Strategic Manager	20	L7	£460	
		Unit 13: The Role of Organizational Culture and Communication in the Delivery of an Organization's Strategy	20	L7	£460	
	120 CREDIT REQUIREMENTS A PASS must be gained on all the units on this program.					

A. AWARD AND ACCREDITATION

TITLE OF QUALIFICATION	TRAVEL AND TOURISM Advanced Subsidiary Level
TAUGHT AT	AIM University Group
AWARDING BODY	Cambridge Assessment, a department of the University Of Cambridge
QUALIFICATION RECOGNITION BODY	Office Of Qualification And Examination Council (OFQUAL)
FOR EXAMINATION	JUNE and NOVEMBER 2020, 2021, and 2022

FOR UNIVERSITY MATRICULATION AND CAREER PROGRESSION

Cambridge's qualifications are recognised by the world's best universities and employers, giving students a wide range of options in their education and career. Every year, nearly a million Cambridge learners from 10000 schools in 160 countries prepare for their future with an international education from Cambridge. The programmes and qualifications set the global standard for international education.

B. DURATION OF STUDY AND YOUR FINANCIAL OBLIGATION

DURATION OF STUDY	Eight (8) Months A college year is eight months with two semesters.		
FINANCIAL INFORMATION	CHOOSE A FLEXIBLE PAYMENT	\$	TOTAL COST OF PAYMENT PLAN
	FULL PAYMENT: PAY 8-MONTH PROGRAM FEE ONCE (Save \$200)	\$1,300	\$1,300
	MAKE TWO PAYMENTS (SAVE \$200)	\$650	\$1,300
	MAKE THREE PAYMENTS	£500	\$1,500
	<i>External Registration And Examination Fee Is Not Included</i>		

C TOPICS COVERED IN 8 MONTHS

Features of the travel and tourism industry:

- scale of the travel and tourism industry
- factors affecting tourism
- structure of the travel and tourism industry
- subsectors of the travel and tourism industry

Principles of customer service in travel and tourism

- customers and their needs
- impacts of quality customer service
- assessing the quality of customer service in travel and tourism organizations

Planning and managing a travel and tourism event

- working in a team
- choosing the event
- producing a business plan for a travel and tourism event
- preparing for the event
- running the event
- evaluating the event and making recommendations

B. AWARD AND ACCREDITATION

TITLE OF QUALIFICATION	BUSINESS STUDY ADVANCED SUBSIDIARY LEVEL
TAUGHT AT	AIM University Group
AWARDING BODY	Cambridge Assessment, a department of the University Of Cambridge
QUALIFICATION RECOGNITION BODY	Office Of Qualification And Examination Council (OFQUAL)
FOR EXAMINATION	JUNE and NOVEMBER 2020, 2021, and 2022

FOR UNIVERSITY MATRICULATION AND CAREER PROGRESSION

Cambridge's qualifications are recognised by the world's best universities and employers, giving students a wide range of options in their education and career. Every year, nearly a million Cambridge learners from 10000 schools in 160 countries prepare for their future with an international education from Cambridge. The programmes and qualifications set the global standard for international education.

B. DURATION OF STUDY AND YOUR FINANCIAL OBLIGATION

DURATION OF STUDY	Eight (8) Months A college year is eight months with two semesters.		
FINANCIAL INFORMATION	CHOOSE A FLEXIBLE PAYMENT	\$	TOTAL COST OF PAYMENT PLAN
	FULL PAYMENT: PAY 8-MONTH PROGRAM FEE ONCE (Save \$200)	\$1,300	\$1,300
	MAKE TWO PAYMENTS (SAVE \$200)	\$650	\$1,300
	MAKE THREE PAYMENTS	£500	\$1,500
	<i>External Registration And Examination Fee Is Not Included</i>		

C. TOPICS COVERED IN 8 MONTHS

Business and environment	Enterprise Business structure Size of business	Business objectives Stakeholders in a business
People in organizations	Management and leadership Motivation Human resource management	
Marketing	What is marketing? Market research The marketing mix	
Operations and project management	The nature of operations Operations planning Inventory management	
Finance and accounting	The need for business finance Sources of finance Costs	Accounting fundamentals Forecasting cash flows and managing working capital

ENTRY REQUIREMENTS FOR UNDERGRADUATE COURSES

STAGE 1:

ANY **ONE** OF THE FOLLOWING CREDENTIALS IS ACCEPTABLE FOR ENTRY ON THE LEVEL 5 HIGHER NATIONAL DIPLOMA (HNDs)

- ✚ US High School Diploma - GED
- ✚ SAT (Score 900)
- ✚ Four (4) IGCSE at grades A, B, C & D
- ✚ Four (4) CSEC at grades 1, 2 & 3
- ✚ Other High School Senior Qualifications
- ✚ Level 3 National Diploma (BTEC, City And Guild etc.)
- ✚ 25 years and older with three (3) CSEC Subjects
- ✚ 30 years and older with five (5) years' work experience (with assessment conducted of your work life experiences and demonstrated competencies)

STAGE 2:

TO TOP-UP THE BACHELOR'S DEGREE ON FINAL YEAR

- ✚ Level 5 Higher National Diploma (HND)

ENTRY REQUIREMENTS FOR GRADUATE COURSES: EXECUTIVE MASTERS

ANY **ONE** OF THE FOLLOWING CREDENTIALS IS ACCEPTABLE FOR ENTRY ON THE LEVEL 7 EXTENDED DIPLOMA IN STRATEGIC MANAGEMENT AND LEADERSHIP

- ✚ Bachelor's Degree
- ✚ Five Years Management Experience (with assessment conducted of your Job Experience and Work Portfolio)
- ✚ Level 5 HND with two years Supervisory/Management Experience (with assessment conducted of your work life experiences and demonstrated competencies)

TO TOP-UP THE MASTER'S DEGREE ON FINAL YEAR (EXECUTIVE MBA)

- ✚ Level 7 Extended Diploma In Strategic Management And Leadership

ENTRY REQUIREMENTS FOR CAMBRIDGE ADVANCED SUBSIDIARY TOURISM AND BUSINESS, ADVANCED LEVEL PRE-MED, AND THE SHORT FOR CREDIT COURSES

ANY **ONE** OF THE FOLLOWING CREDENTIALS IS ACCEPTABLE FOR ENTRY ON THE ADVANCED SUBSIDIARY (AS)

- ✚ US High School Diploma - GED
- ✚ SAT (Score 900)
- ✚ Three IGCSE at grades A, B, C & D
- ✚ Three (3) CSEC at grades 1, 2 & 3
- ✚ Other High School Senior Qualifications
- ✚ Level 2 National Diploma (BTEC, City And Guild etc.)
- ✚ 25 years and older with two (2) CSEC Subjects at grades 1, 2 & 3
- ✚ 30 years and older with five (5) years' work experience (with assessment conducted of your work life experiences and demonstrated competencies)

ENTRY REQUIREMENTS FOR THE PRE-MED ADVANCED LEVEL

- ✚ SAT (Score 1200)
- ✚ Five IGCSE at grades A & B (Including One Science Subject, Mathematics and English)
- ✚ Five (5) CSEC at grades 1 & 2
- ✚ Other High School Senior Qualifications

ENTRY REQUIREMENTS FOR GED US HIGH SCHOOL DIPLOMA, PRE-MED ORDINARY LEVEL, AND THE SHORT NO CREDIT CERTIFICATE COURSES

- No subjects are required
- Candidates must pass the entry exam

Pre-Admission Process

Submit Your Admission Application here:

<https://www.aimuniversitygroup.org/>

Pay The Application Fee Of \$30.00

(Go To <https://www.aimuniversitygroup.org/where-to-pay.html> for the different ways to pay)

Application Fee is non-refundable

Email the Payment Receipt to:

enroll@aimuniversitygroup.org

Email Response Will Be Sent To You Within 48 Hours Of The Receipt.

This email is to acknowledge receipt of the Application And Application Fee

Another email will be sent to you within 48 hours.

This email will contain the link to the online entrance test. The test consists of
1) The Personal And Professional Statement And 2) The Critical Thinking Test.

You Are Allowed To Take The Test No More Than Three (3) Times

The Offer Letter

will be sent to you via email and within 96 hours of the testing

Included in the Offer is further instructions for admission and the program disclosure: your program start date, program outline, fees, outstanding documents and requirements, and instructions on payment and submission deadlines.



AIM | The American Institute Of Management And Science University Group Inc

150 South Pine Island Road, Plantation, FL 33324
PHONE: 954-880-1283 | EMAIL Enroll@aimuniversitygroup.org

Thank you for your interest in pursuing your diploma and degree with us. AIM University Group is a leader in global education in Airline and Aviation Study, Business Administration, Healthcare Practice, International Travel and Tourism Management, and Strategic Management and leadership.

We provide a supportive learning environment and our students enjoy:

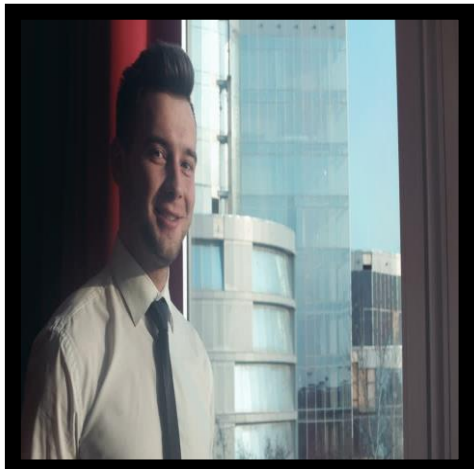
- Faster degree completion,
- Lower tuition,
- Study abroad opportunities,
- Experienced faculty and Innovative teaching methods,
- Lively discussions, and
- More flexibility with better control of their study time

You can study the first 24 Months in-class in Jamaica, have face-to-face tutorials in Fort Lauderdale, or take your classes 100% online. Then you'll enter 3rd year of University to top-up the degree in little as 1-2 years! AIM-USA is the best way to live, study and work abroad and you can take this qualification wherever you go.

EARN-WHILE-YOU-LEARN! Join our International Network of Admission Agents and start earning today! This is a proven way to raise some of the money to realize your dream of studying final year abroad.

BENEFITS: From 2020/2 our students will benefit from discounts, scholarships, free laptops, and free airline tickets for our annual field trips to Florida. Conditions usually apply but we'll keep you posted on the offers!

I've created this information packet to help you get started. The first step is going to our website and completing the admission application, then paying the application fee of \$30. The cost of your tuition will vary depending on your payment plan. Please let me know if you need further help to get started.



Best Regards,
Dan Weber

*Center For Global Enrollment And Student Support
AIM University Group*

EMAIL ME AT: Enroll@AimUniversityGroup.Org

P: 786-980-1429 (USA) | 876-613-9108 (JAMAICA)

P: Toll-Free: 1-888-655-1406

A: 150 South Pine Island Road, STE 300, Plantation, FL 33324

A: 6 Hillview Avenue, Kingston 10, Jamaica

WEBSITE: www.AimUniversityGroup.Org

Here's A Great Way To Pay For Your Education

COME WORK WITH US

AIM University Group is always looking for motivated people to join our team of International Recruiters

BENEFITS OF JOINING OUR TEAM

- Our remuneration package is the fastest way to earn a million-dollar revenue doing something that you'll absolutely love. This is 21st Century recruiting. No bags, no papers, no door-to-door sales pitch.
- The 7-day training is FREE. It's designed to educate you on the products and provide the tools you'll need to succeed in this role.
- The monthly residual income, bonus and commission are extremely attractive
- You can schedule your earning for every fortnight, every month, or every 60 day
- You don't need any specific qualification to start earning up to US\$1,200+ every 30-day.
- Your job is easy! Tell everyone you meet about our accredited suite of international programs and help them to enroll successfully. You can even make this your full-time work!
- Top performers receive \$100 - \$1,000 cash-in-hand incentives, free trip for 2 with \$500 shopping money, cruise, weekend all-inclusive hotel packages, tuition scholarships, and more!

TO APPLY FOR THIS ROLE GO TO

www.AimUniversityGroup.Org and select 'Hiring Agents'

This is a life changing opportunity. Apply!

~~~~~ **AIM UNIVERSITY GROUP INC** ~~~~~

PHONE: 786-980-1429 (USA)

PHONE: 876-613-9108 (JAMAICA)

PHONE: 954-325-5319 (WhatsApp)

EMAIL: [Enroll@AimUniversityGroup.org](mailto:Enroll@AimUniversityGroup.org)

WEBSITE: [www.AimUniversityGroup.org](http://www.AimUniversityGroup.org)

~~~~~ **AIM UNIVERSITY GROUP INC** ~~~~~

150 South Pine Island Road,
Plantation,
Florida 33324
United States